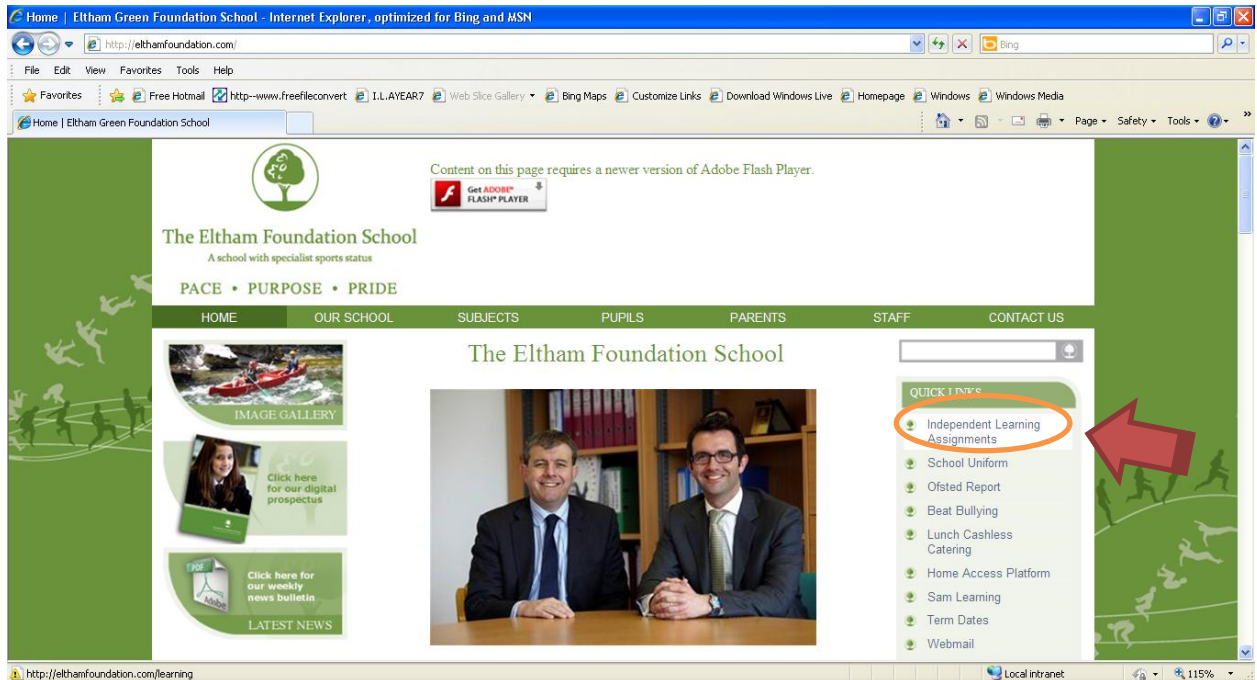


Independent Learning Guide:

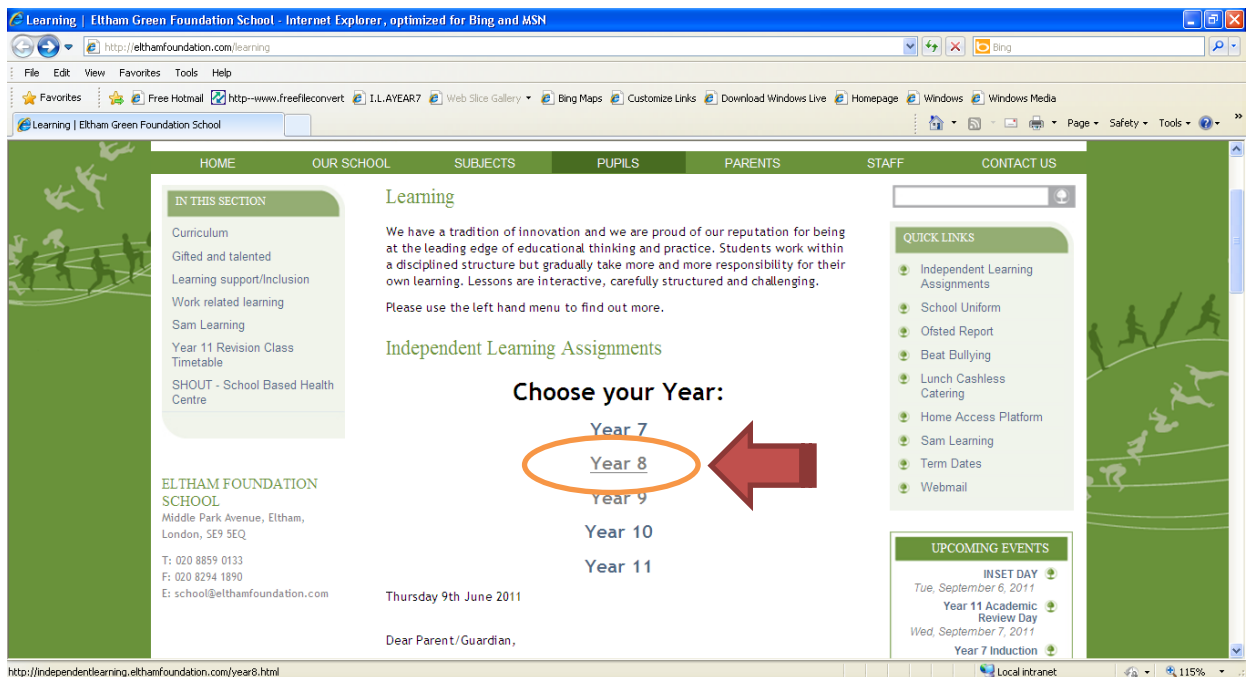
1.

Click on 'Independent Learning Assignments' located in the 'Quick Links' Section on the School Website:



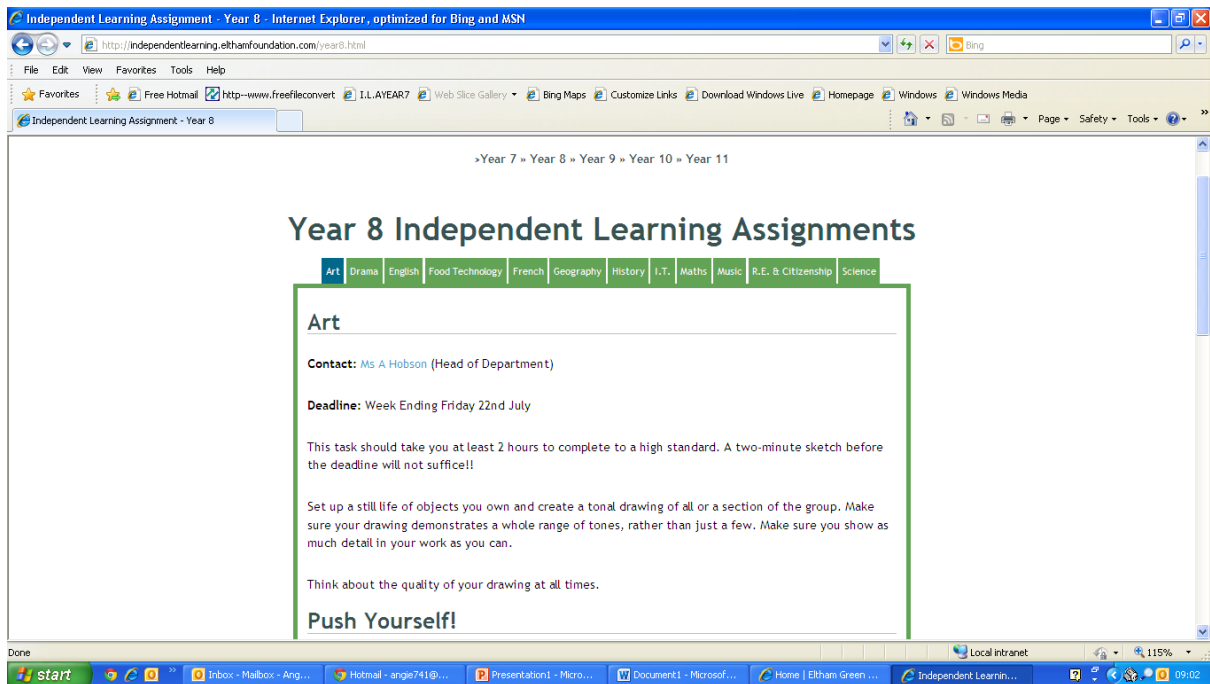
2.

A new Window will open. Select the Year you wish to view.



3.

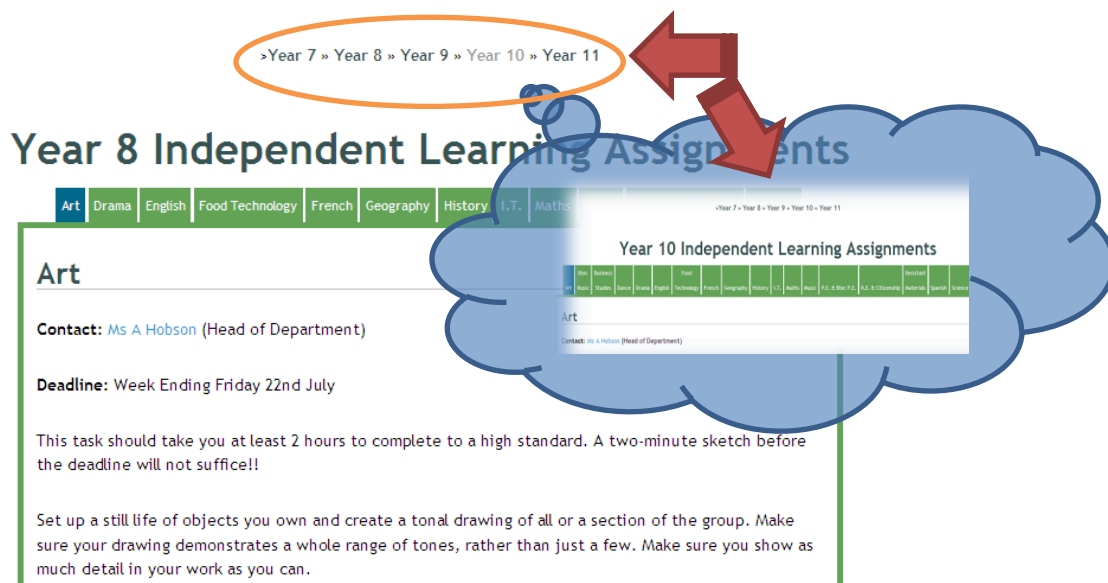
Once selected you will see the Independent Learning Page for Year 8.



4.

You may select a different Year By clicking on the Year Selection Bar:

Click on the Year you wish to view and you will then be located to the Year Page that you have chosen.



5.

Here is a summary of the Independent Learning Page:

Here is where you can access the Subject you wish to view.

Art

Contact: Ms A Hobson (Head of Department)

Deadline: Week Ending Friday 22nd July

This task should take you at least 2 hours to complete to a high standard. A two-minute sketch before the deadline will not suffice!!

Set up a still life of objects you own and create a tonal drawing of all or a section of the group. Make sure your drawing demonstrates a whole range of tones, rather than just a few. Make sure you show as much detail in your work as you can.

Think about the quality of your drawing at all times.

Push Yourself!

Take an object with a reflection, like a glass or bottle and include the reflection in a close up drawing. Look at the way the world is distorted through the reflection. Add colour to finish.

[Print this page](#)

Here is where you will find the content of the Independent Learning Assignment.

This is the 'Push Yourself Task'. It is an extension to the main task.

Here is where you can print your Independent Learning Assignment.

6.

To Print your Independent Learning Assignment: Click on the 'Print This Page' Button.

Year 8 Independent Learning Assignments

Art

Contact: Ms A Hobson (Head of Department)

Deadline: Week Ending Friday 22nd July

This task should take you at least 2 hours to complete to a high standard. A two-minute sketch before the deadline will not suffice!!

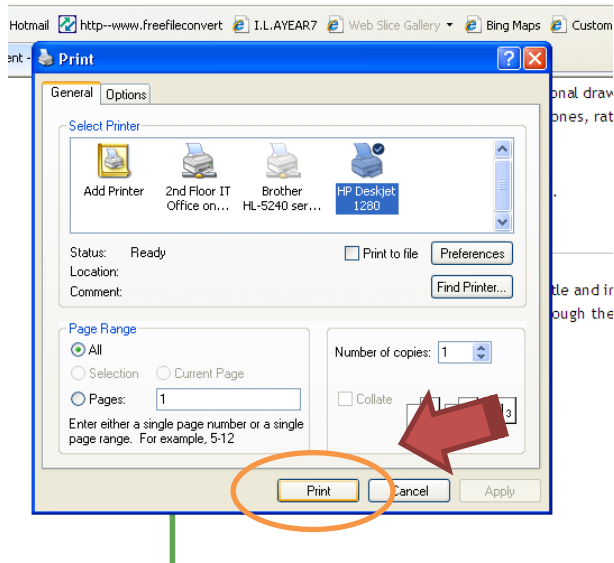
Set up a still life of objects you own and create a tonal drawing of all or a section of the group. Make sure your drawing demonstrates a whole range of tones, rather than just a few. Make sure you show as much detail in your work as you can.

Think about the quality of your drawing at all times.

Push Yourself!

Take an object with a reflection, like a glass or bottle and include the reflection in a close up drawing. Look at the way the world is distorted through the reflection. Add colour to finish.

[Print this page](#)



Select your Printer and simply press 'Print'. This will print the Independent Learning Assignment that you have selected.

7.

To select a different Subject: As you hover your mouse over the Subject Bar you will find that the subject Tab will Highlight in Blue as well as the Subject selected. Click on the Desired Subject to View the Independent Learning Assignment.

Year 8 Independent Learning Assignments

Art Drama English Food Technology French Geography History I.T. **Maths** Music R.E. & Citizenship Science

Art

Contact: Ms A Hobson (Head of Department)

Deadline: Week Ending Friday 22nd July

This task should take you at least 2 hours to complete to a high standard. A two-minute sketch before the deadline will not suffice!!

Set up a still life of objects you own and create a tonal drawing of all or a section of the group. Make sure your drawing demonstrates a whole range of tones, rather than just a few. Make sure you show as much detail in your work as you can.

8.


Here is the Maths Page for Year 8: You will notice that sometimes Links are added to view other Websites or Documents; these are highlighted in bright blue simply click on the writing.

Year 8 Independent Learning Assignments

Art	Drama	English	Food Technology	French	Geography	History	I.T.	Maths	Music	R.E. & Citizenship	Science
-----	-------	---------	-----------------	--------	-----------	---------	------	--------------	-------	--------------------	---------

Maths


Contact: [Mr A Tucker](#) (Head of Department)

Deadline: Week Ending Friday 22nd July 

You will need to log onto www.mymaths.co.uk . Enter the school's login and password which is **elthamgreen** and **table2**. Then enter your personal login and password. If you do not know your login or password you must ask your teacher or come and ask Mr Acheson.

Please Click the following **Link/s** below to access the Homework provided.

Links

[Click Here for Year 8 Homework](#) 

Push Yourself!


9.

To Contact Your Subject Teacher: Click on The Teacher's Name Highlighted in Bright Blue.

Year 8 Independent Learning Assignments

Art	Drama	English	Food Technology	French	Geography	History	I.T.	Maths	Music	R.E. & Citizenship	Science
-----	-------	---------	-----------------	--------	-----------	---------	------	--------------	-------	--------------------	---------

Maths

Contact: [Mr A Tucker](#) (Head of Department) 

Deadline: Week Ending Friday 22nd July

You will need to log onto www.mymaths.co.uk . Enter the school's login and password which is **elthamgreen** and **table2**. Then enter your personal login and password. If you do not know your login or password you must ask your teacher or come and ask Mr Acheson.

Please Click the following **Link/s** below to access the Homework provided.

Links

[Click Here for Year 8 Homework](#)

Push Yourself!

10.

By clicking on the Teacher's name, a new email will automatically appear with the Teacher's Email Address and will insert the accurate Subject. All you have to do is type in your Question in the content Box.

The image shows a screenshot of an email composition interface. At the top left, there is a 'Send' button with an envelope icon. To its right are three input fields: 'To...' containing 'Alan Tucker', 'Cc...' which is empty, and 'Subject:' containing 'Independent Learning Assignment Year 8'. Below these fields is a yellow background area for the email body. It contains the text 'Dear Mr Tucker,' followed by a dotted line for a message body, 'Kind Regards', and a signature 'Angela Seldon' in a cursive font. Three red arrows are overlaid on the image: one points to the 'To...' field, another points to the 'Subject' field, and a third points to the signature.