



PACE • PURPOSE • PRIDE



The Eltham Foundation School

A Trust School supported by the University of Greenwich



“”

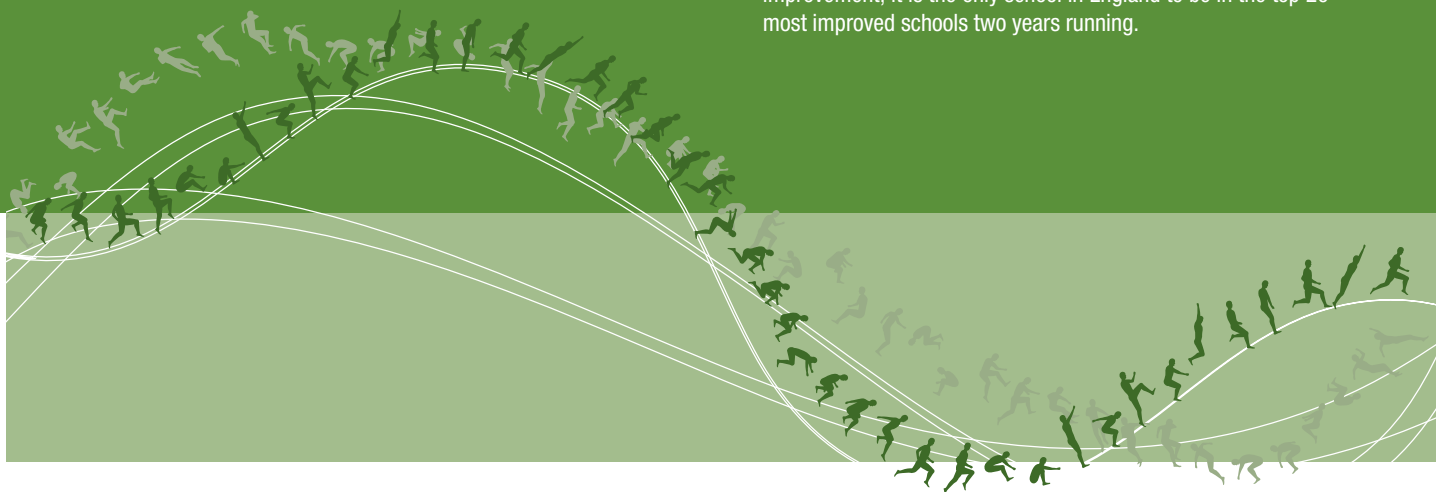
Wow!
This school has
really changed!

Adneli, Year 11

Welcome

Welcome to The Eltham Foundation School, an organisation full of pace, purpose and pride, where every child is treated as an individual and students are pushed to reach their full potential.

We took over the school in January 2011 following a disappointing Ofsted in November. We have a proven track record of 'turning around' schools in record time: our other school, Chafford Hundred Campus in Essex, went from 16% to 80% 5A* - C including maths and English (the key measurement) in only four years, and was the only school in the country to be shortlisted for Secondary School of the Year twice in a row (2009/10) and won Most Improved School in the Country 2010 (DfE League Tables) for four years' sustained improvement; it is the only school in England to be in the top 20 most improved schools two years running.





A school built on our core values:

Pace: we prepare our students for the fast paced, demanding, modern world with a relevant, practical and modern curriculum. Our staff are highly driven and motivated to get the best out of your child.

Purpose: all students have talent and we aim to unlock this. We have the highest expectations of all stakeholders in all areas and constantly look for ways to improve our school for the students.

Pride: our community deserves a school of which it can be proud, with students and staff who walk tall and work together to create an outstanding learning experience for all.



As acknowledged by Ofsted in May 2011, The Eltham Foundation School has made breathtaking improvements in a very short space of time and we are incredibly proud to be Heads of a school which has a personalised, individualised curriculum offering a wide range of choice and opportunities for every child to succeed. We place huge importance on literacy and numeracy, with struggling students identified early in Year 7 and given specialist, intensive and targeted intervention from a range of sources, including private tuition which we use extensively throughout the school to help students reach their target levels in maths and English. Expectations of behaviour are very high, ensuring a calm, warm and purposeful atmosphere in the school which maximises learning.

Our staff are dedicated to the school and committed to guiding our students not just to their academic potential, but to becoming well-rounded and confident young people, ready to face the challenges of the adult world. Our intensive mentoring system, our high expectations of behaviour, our close relationships with parents, our outstanding sporting facilities and our constant and relentless focus on improving standards in all areas of the school is making a real difference to the lives of our pupils.

The Eltham Foundation School is becoming a beacon for education in Greenwich. To discover the opportunities and personalised education that we can offer to your son or daughter please arrange to come and visit us.

Yours faithfully



Chris Tomlinson
Executive Head

George McMillan
Head of School



Learning

Lessons at The Eltham Foundation School aim to be challenging for students, pitched at the right level and pace with appropriate task adjustment to ensure that all students in the lesson can access the curriculum and achieve their potential. Our staff work hard to perfect their 'Assessment for Learning' skills: throughout lessons they and the students know exactly where they are in terms of prior knowledge and current understanding, where they are going in the lesson and why, and how they are going to get there. This ensures that pupils not only know their target levels, but how they will achieve them.



Achieving Together

Student progress at all levels

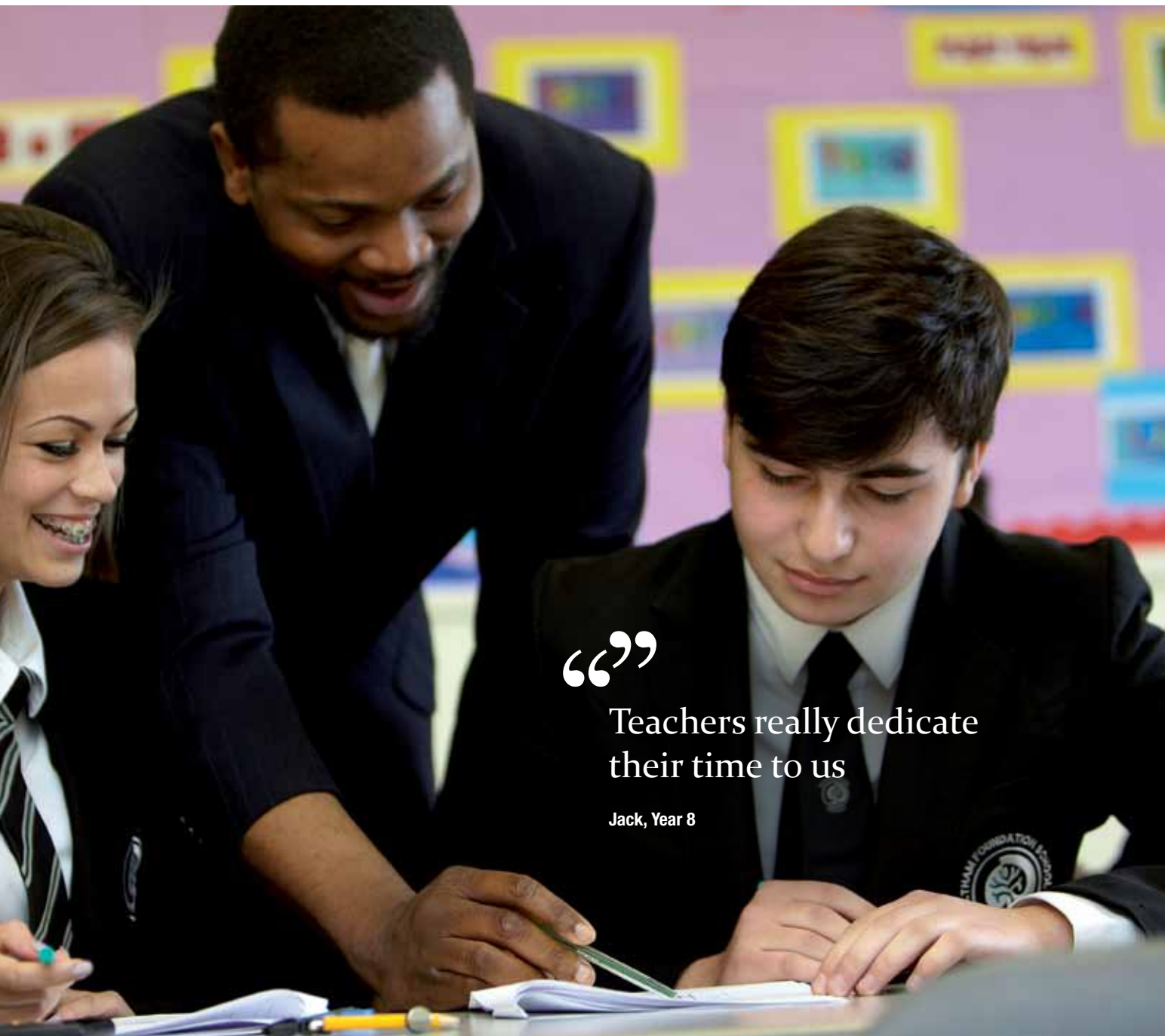
We monitor the progress of all our students very carefully, with a detailed half-termly analysis of all students and all subjects, identifying areas of strength and weakness and which students require further intervention. Students are given challenging targets to reach and those struggling are given a wide variety of support in order to make outstanding progress. All students have a 'learning guide' who they meet weekly in very small groups for 30 minutes in order to discuss in detail their data and how they can make better progress.

Our Learning Support Department offers excellent support to our students with Special Educational Needs and ensures that they progress well throughout their learning journey at The Eltham Foundation School; our Gifted and Talented students are also well catered for, with an enrichment programme designed to stretch them and meet their needs. All our students are talented and we will nurture this potential to the full. Throughout the school we use 'task adjustment' in lessons to ensure that every single child can not only access the curriculum but is pushed to achieve beyond their expectations.

PACE • PURPOSE • PRIDE

Pride





“”

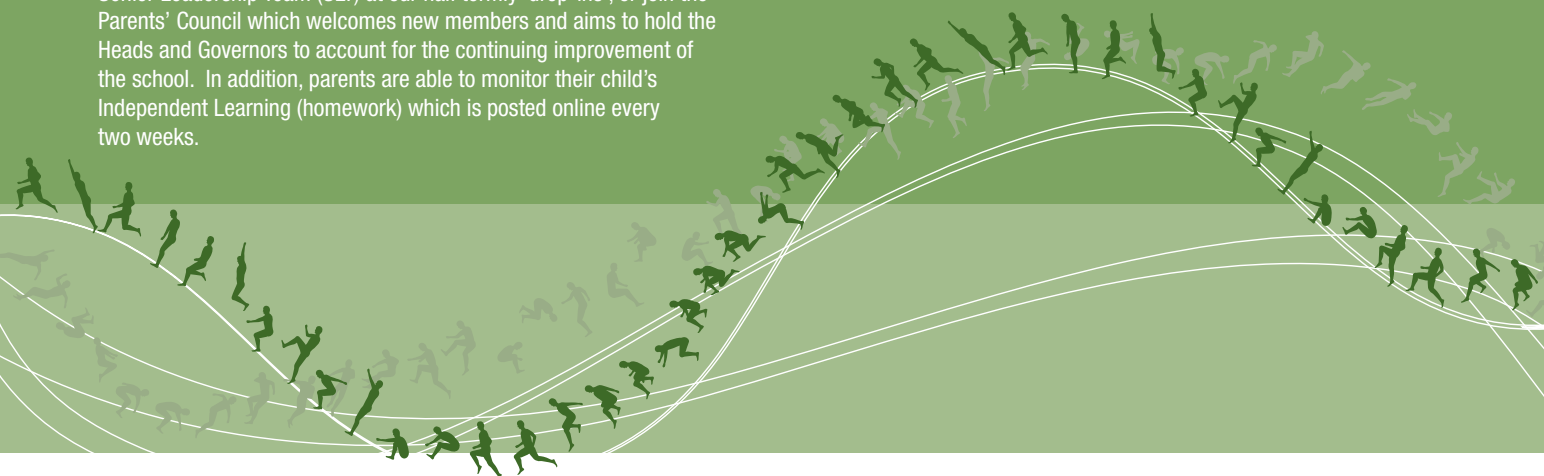
Teachers really dedicate their time to us


Jack, Year 8

Parental Involvement

The partnership between parents, students and staff is vital to the success of the school and we contact parents frequently to discuss their child's successes or development needs, and have parents' evenings every half term. Parents can email or phone us at any time and we return enquiries within 24 hours. They can also meet the Headteachers once every half term at the Parents' Forum, or with the Senior Leadership Team (SLT) at our half termly 'drop-ins', or join the Parents' Council which welcomes new members and aims to hold the Heads and Governors to account for the continuing improvement of the school. In addition, parents are able to monitor their child's Independent Learning (homework) which is posted online every two weeks.

Furthermore, we meet all new parents or guardians and their children face-to-face on a special interview day where our high expectations are discussed and problems or queries answered so that students can make a really positive transition to our school. The input that parents have into our key strategies and forward direction of the school is really valued.





“

Learning is strongly supported by students' behaviour and attitudes

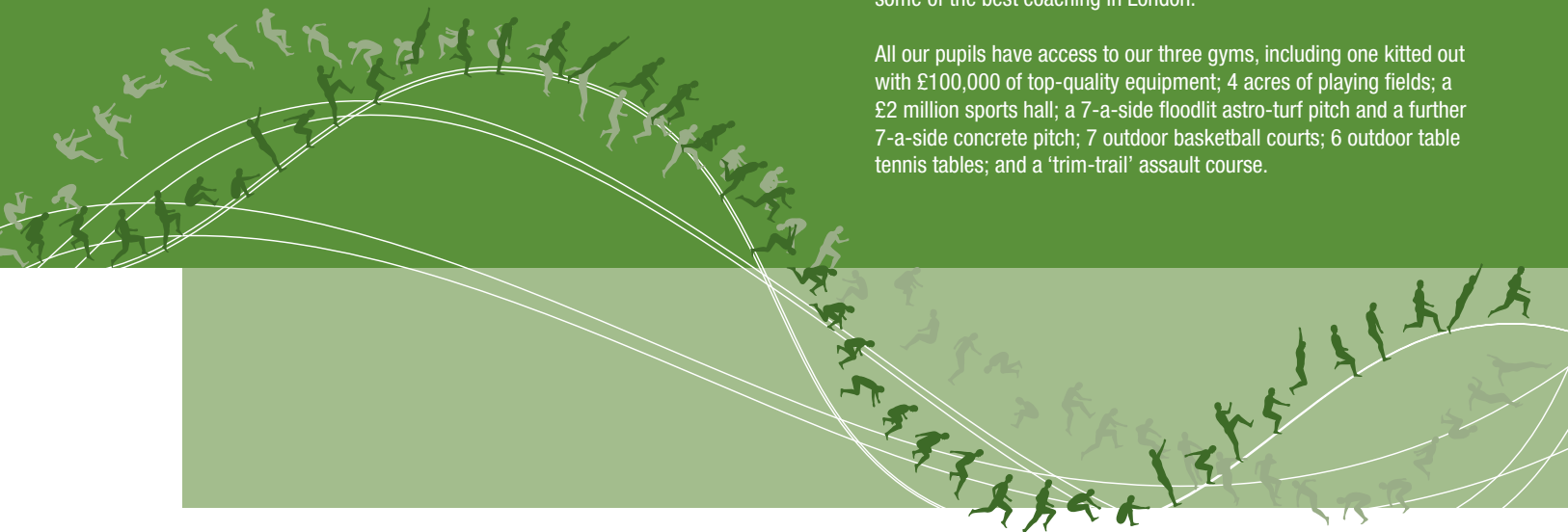
Ofsted, May 2011

A Specialist Sports College

Involvement in sport is a massive motivator for many students and leads to increased academic performance, driving up standards across the school.

The Eltham Foundation School is the leading school for sport in Greenwich and our mission is to inspire a lifelong love of sport and healthy living. Our facilities and resources are superb, allowing students to participate in a huge variety of sports, including cricket, rugby, football, dance and athletics. Many of our footballers are scouted by clubs such as Millwall FC and Charlton Athletic, and have access to some of the best coaching in London.

All our pupils have access to our three gyms, including one kitted out with £100,000 of top-quality equipment; 4 acres of playing fields; a £2 million sports hall; a 7-a-side floodlit astro-turf pitch and a further 7-a-side concrete pitch; 7 outdoor basketball courts; 6 outdoor table tennis tables; and a 'trim-trail' assault course.





“

The school's specialist status is having a strong impact on outcomes for sports and related subjects and the leadership of this area is outstanding.

Ofsted, 2010



Regardless of ability, we encourage students to find activities they enjoy and which provide the best opportunities for success, not to mention confidence building and having a lot of fun.

We offer further qualifications in related areas, such as nationally recognised certificates in coaching and refereeing. We are committed to sports development in our wider community too, working with primary schools, families, local clubs and teams to promote access to sport and to keep raising standards. The school also runs sports clubs and classes for students and parents on Saturdays and during school holidays.

Our own teams and clubs compete for the school in a wide variety of sports with considerable success and we take great pride in their achievements.

However, encouraging our young people to greater sporting prowess does not come at the cost of their academic ability. We have high academic aspirations and expectations of behaviour from our talented sporting students; this helps them to achieve well throughout the school.



PACE • PURPOSE • PRIDE

Pride



Student Voice

We believe that all stakeholders should have a confident voice in the school which is listened to, respected and acted on. All year groups have a Student Council group to represent the views of their peers and they not only hold regular meetings with our Community Cohesion Director, but also are invited to lunch with the Headteachers every half term where their issues are discussed and action points decided. The student voice has power and is valued; they have an input into school decision-making, giving them a sense of ownership and clear direction.

“

Expectations and challenge are high.

Ofsted, May 2011



Student Health, Welfare & Safety

Caring for our students

At The Eltham Foundation School we take care of our students. Each year group has a dedicated Pastoral Manager who gets to know the students and families really well and helps them with a wide range of issues from academic to personal; they are highly skilled at getting the best out of students. We value each individual child and the Senior Leadership Team spend a huge amount of time in corridors, classrooms and the playground, chatting to students and sorting out any problems they might have. We have two Home Liaison Officers who work with parents, helping to ensure high attendance rates and punctuality.

Our Key Stage 2/3 Coordinator ensures that the transition between primary and secondary school is a smooth one, where new Year 7 students feel confident and safe from their first minute in the school. The school is totally committed to the crucial area of Child Protection and all policies and procedures are designed to ensure the safety and happiness of our pupils.

PACE • PURPOSE • PRIDE

Pride





“”

School Council is really well organised and has made loads of positive changes over the last year.

Mohammed, Year 9

Positive Behaviour and Enrichment

Our behaviour management system rewards students for making a positive contribution to school life, from relationships with staff and other pupils, to volunteer work and outstanding academic achievement. Our new rewards system of 'Learning Miles' is very motivating for all students, as is our other range of termly individual and class awards. Misbehaviour is dealt with extremely quickly, fairly but robustly: we have a no-nonsense approach to behaviour and have the highest expectations of all students. Bullying is not tolerated at the school and our anti-bullying strategies ensure that incidents are dealt with effectively and any conflict resolved.

We offer a wide range of school trips, from academic courses at Wrotham to a theme park trip to Alton Towers which is free for all pupils who attain 100% attendance for the year. There are foreign trips which students can go on: recent trips include Spain, Portugal and Romania. Costs are reduced as far as possible in order to give all pupils the opportunity to experience wider school life.

There are also a huge number of enrichment activities before and after school offering an extended school day from 7.30am, during which pupils can take part in a variety of sports. Other clubs vary from the solely academic, which we offer at weekends and in holidays too, to hobby clubs such as chess, art, dance and drama. Indeed, our Performing Arts department provides vibrant and exciting opportunities for pupils to perform in our theatre or record their music in the recording studio. Many of our students also take part in the Duke of Edinburgh Award scheme which is an incredibly challenging and rewarding experience. We offer full academic revision sessions during each holiday for students sitting exams, including private tuition on a one-to-one basis or in small groups.





“”

A school we'd send our children to

Choose The Eltham Foundation School for your child's education and we will do everything we possibly can to ensure that they are nurtured morally, academically and spiritually. Classes are full of pace and challenge, delivered in a way that is fun, interesting and enjoyable for the students.

Our transition programme from year 6 is designed to ensure a fluid and safe progression from primary school, with students feeling confident and happy from their first day here. We have a zero-tolerance approach to bullying with a wide variety of effective techniques to manage conflict, and our staff work incredibly hard on making The Eltham Foundation School a safe and happy school. From the Headteachers down, we will get to know your child as an individual, not a number or a statistic.

The personalised and individualised curriculum ensures an extensive range of choice for students from Year 8 through to Year 11, who leave school well-equipped to be successful in their lives. Our robust data tracking systems ensure that underachievement is quickly identified and strategies put in place to tackle it. All pupils have the right to fulfil their potential and we aim to help them do it.

We hope this guide helps you get a feel for the school, which has gone through huge changes since we took over in January 2011. The Eltham Foundation School will continue to progress with pace, purpose and pride, offering a good school with great opportunities for our local community.

It is a school where we would send our children.



“”

There are loads of clubs and activities after school to let you catch up with work or just have fun.

Connie, Year 7



PACE • PURPOSE • PRIDE

“”

Progress and attainment are rising strongly.

Relationships between students and staff are good-humoured and constructive.

Ofsted, May 2011

“”

The opportunities offered to me have really inspired me to think about my future career.

Lisa, Year 11



The Eltham Foundation School

A Trust School supported by the University of Greenwich



PACE • PURPOSE • PRIDE

Middle Park Avenue
Eltham
London
SE9 5EQ

Tel: 020 8859 0133
Fax: 020 8294 1890

Email: school@elthamfoundation.com
www.elthamfoundation.com